

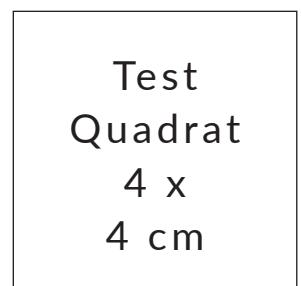
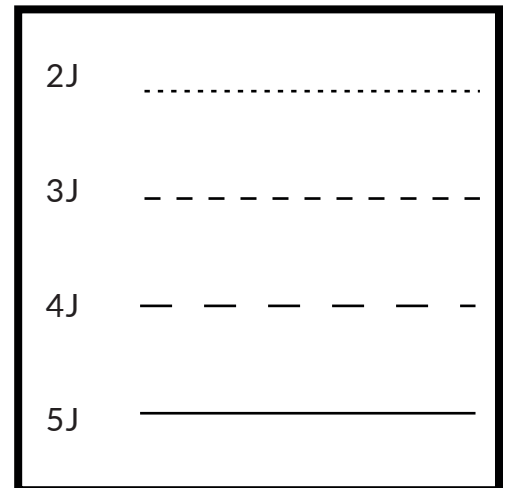
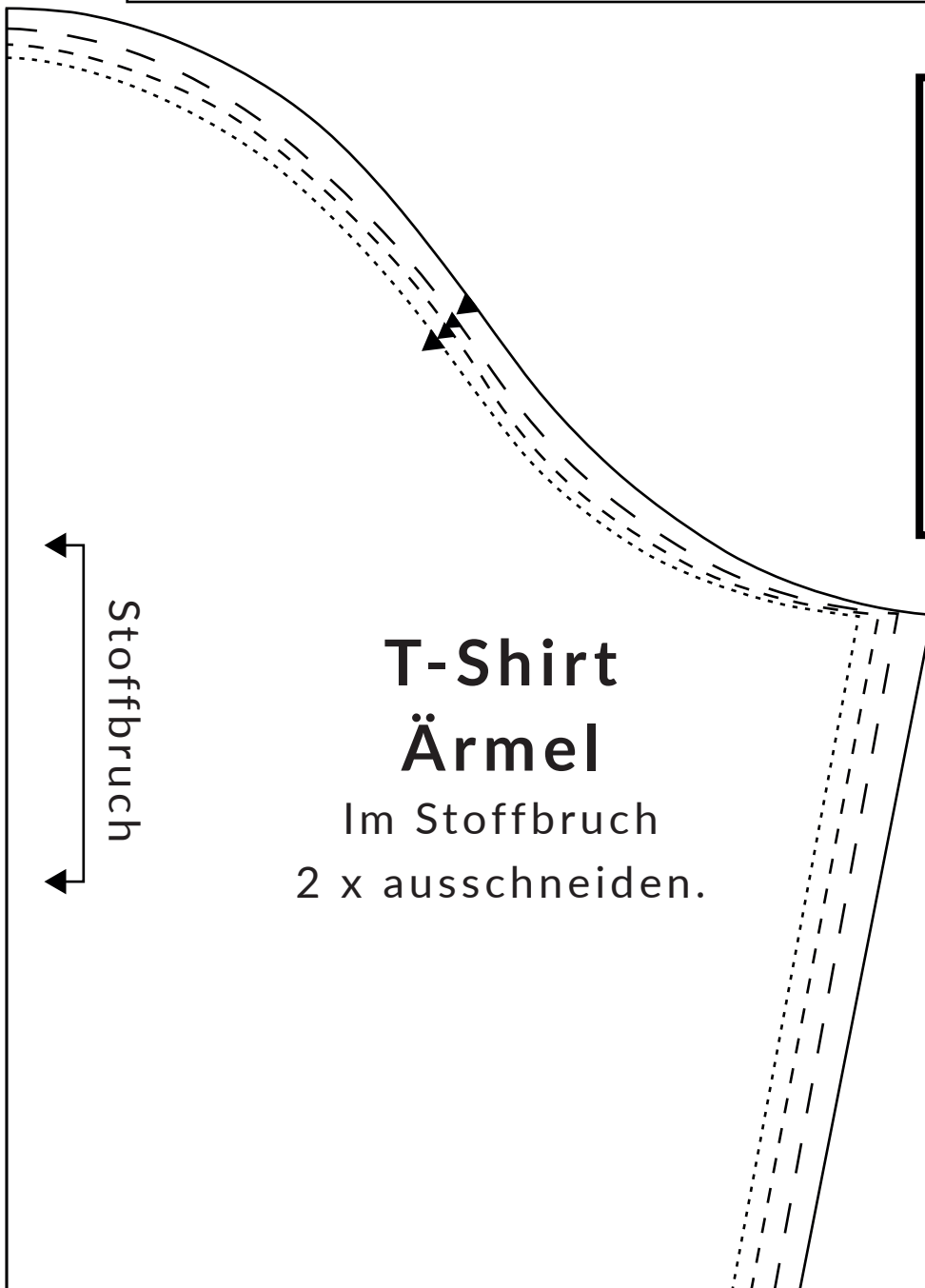
Körpermaße in cm

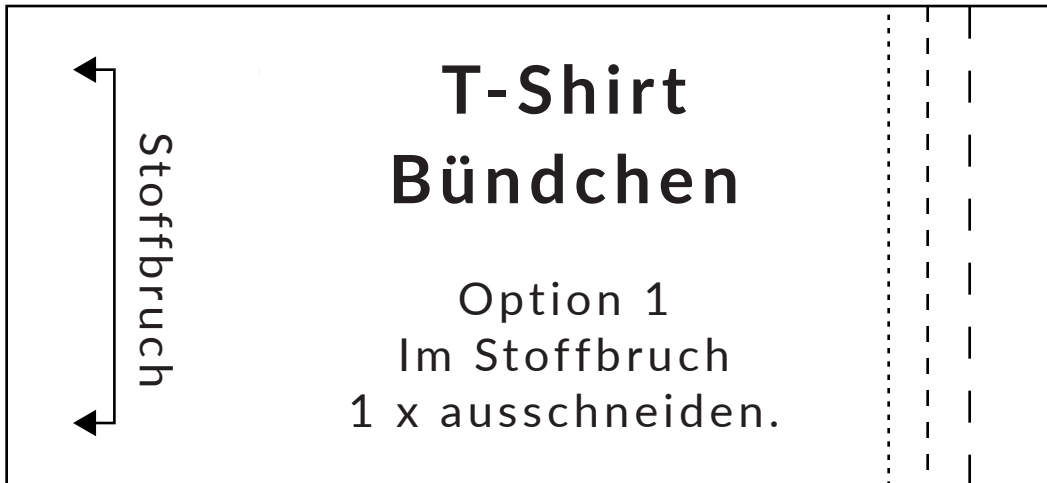
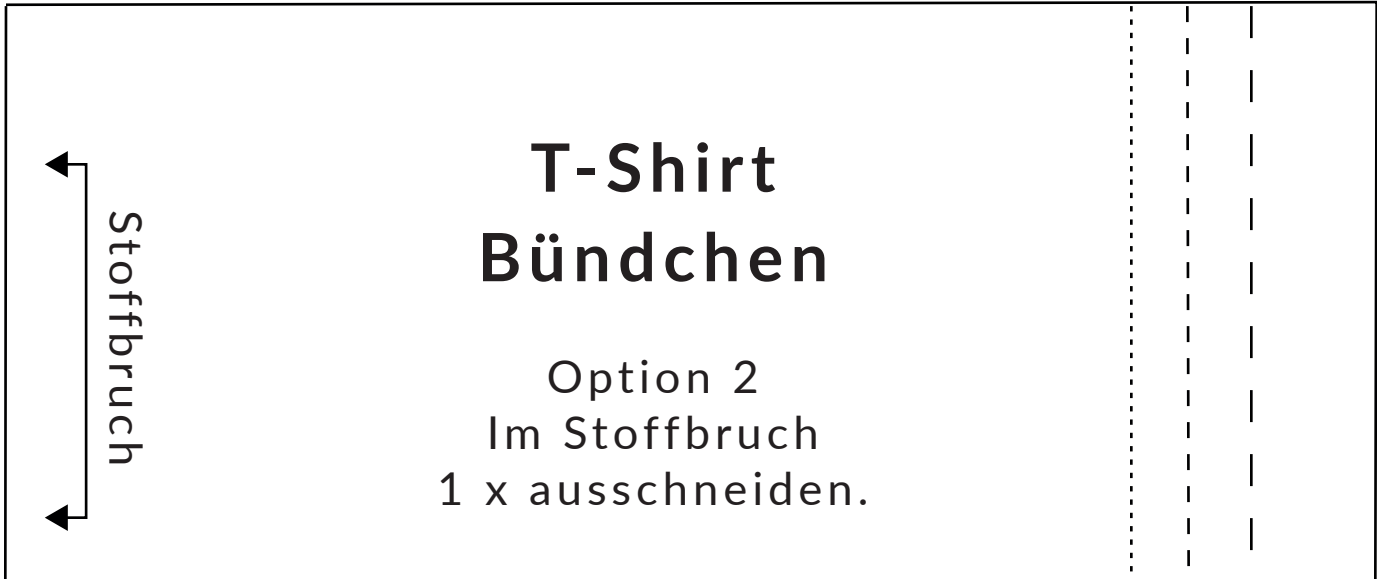
|             | 2J   | 3J   | 4J   | 5J |
|-------------|------|------|------|----|
| Brustumfang | 53,3 | 55,9 | 58,4 | 61 |

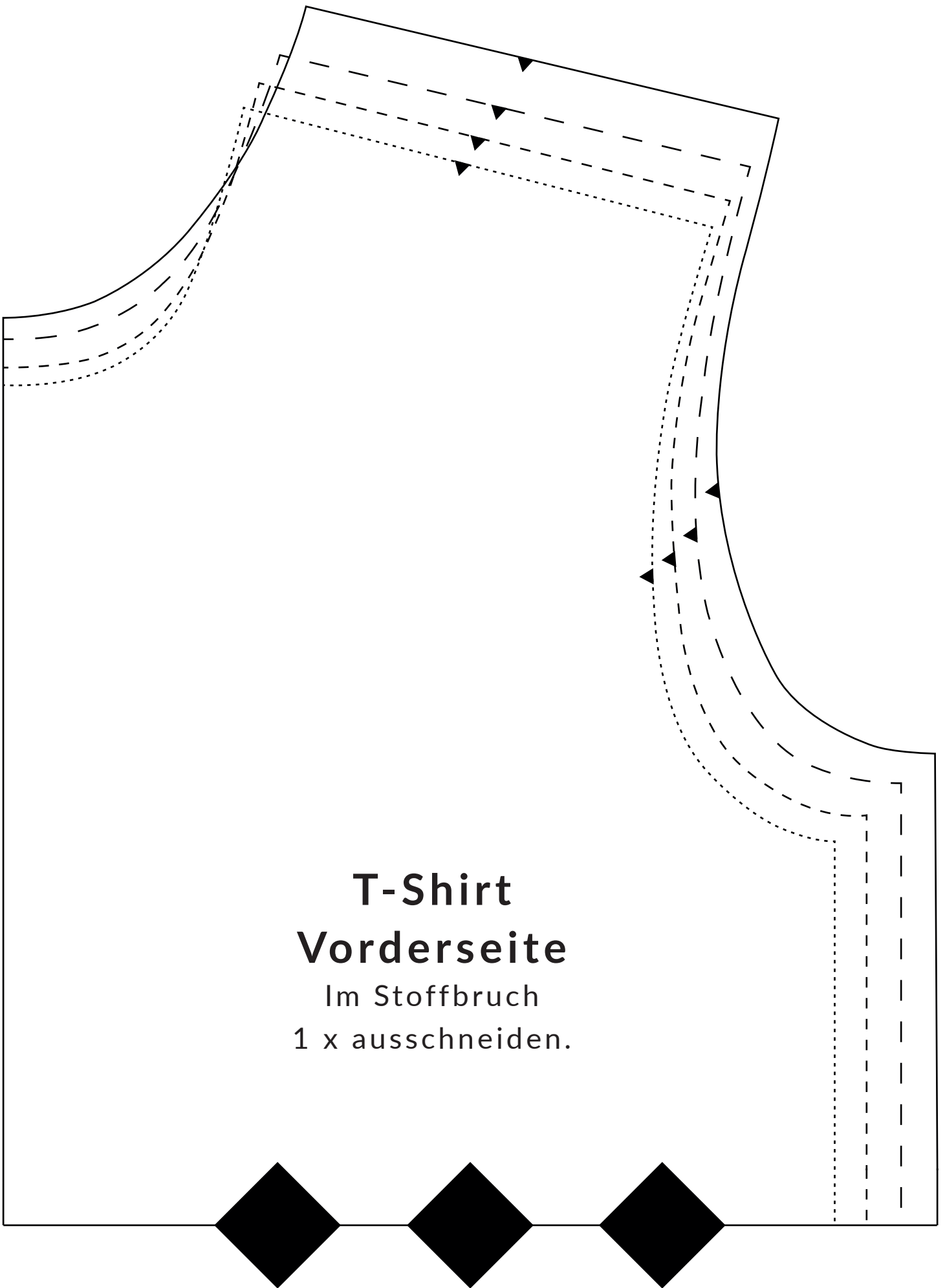
Maße vom fertigen Kleidungsstück in cm

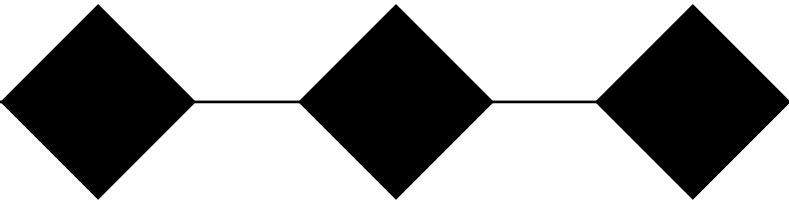
|             | 2J   | 3J   | 4J   | 5J   |
|-------------|------|------|------|------|
| Brustumfang |      |      |      |      |
| Länge       | 37,3 | 40,2 | 41,9 | 44,3 |

(Halsloch bis Saum)





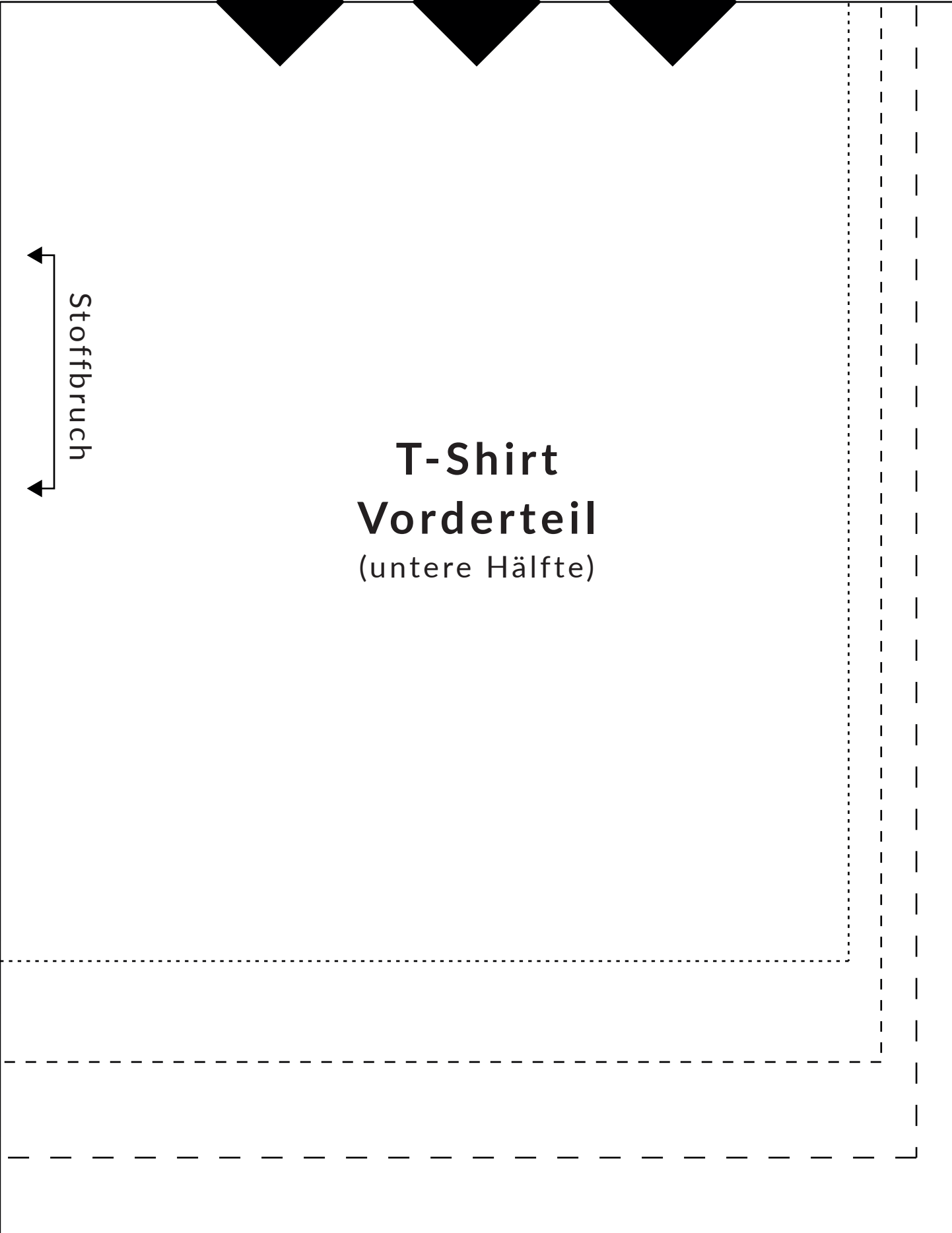


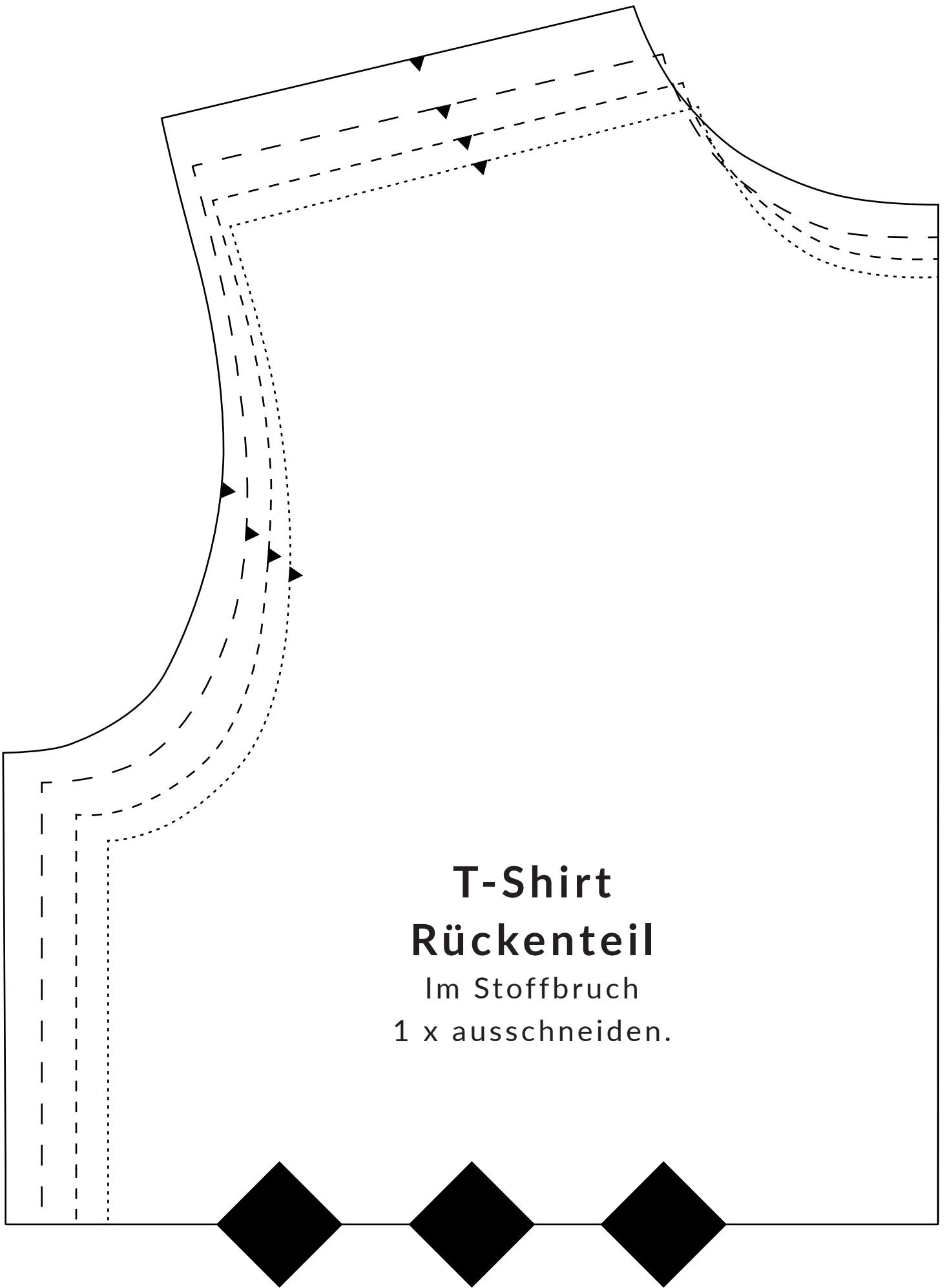


Stoffbruch

A vertical double-headed arrow is located to the left of the text 'Stoffbruch', pointing both upwards and downwards to indicate the direction of fabric break.

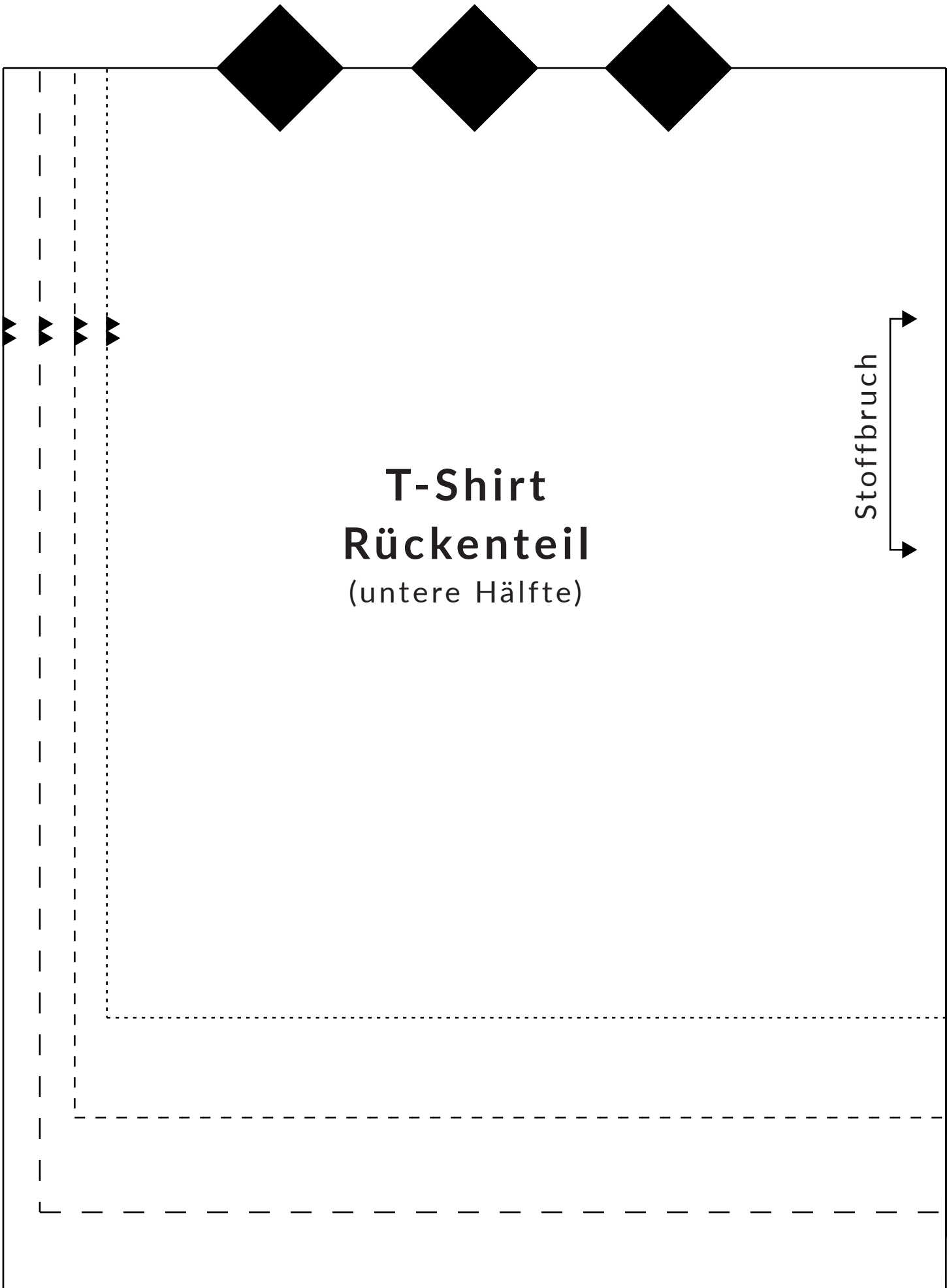
**T-Shirt**  
**Vorderteil**  
(untere Hälfte)





# T-Shirt Rückenteil

Im Stoffbruch  
1 x ausschneiden.



**T-Shirt**  
**Rückenteil**  
(untere Hälfte)

Stoffbruch