



Child's Art Smock

Sizes Youth XS - XL

Child's Art Smock

Featured Design on Cover: Orange Pop by katerhees



WHAT YOU NEED

- 2 yards of Petal Signature Cotton™*
- Free Smock Pattern, available in sizes XS - XL
- Sewing machine
- Fabric scissors
- Pins or Wonder Clips

**Please refer to the smock pattern to determine total yardage required based on your size.*

TO PRINT & ASSEMBLE PATTERN

- Printer paper
- Paper scissors
- Tape
- Printer

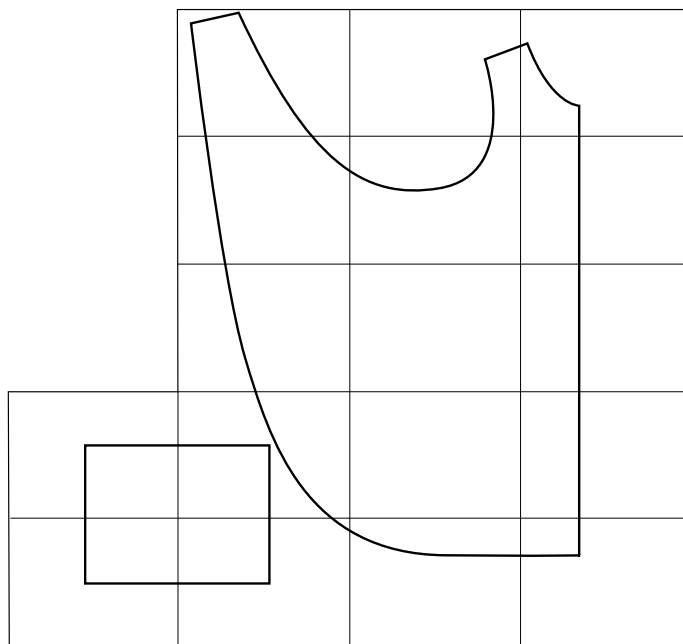
RECOMMENDED FABRIC

- Petal Signature Cotton™
- Lightweight Cotton Twill
- Organic Cotton Sateen
- Cotton Poplin

ADDITIONAL NOTES

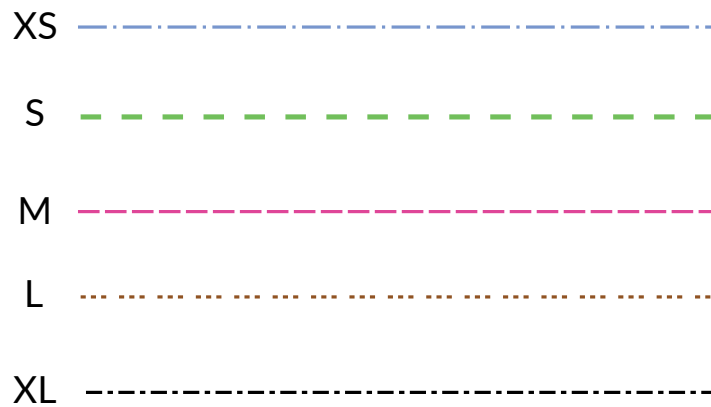
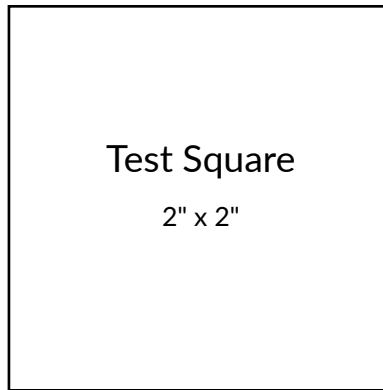
All seam allowances are $\frac{3}{8}$ " unless otherwise stated.

PRINT LAYOUT



Child's Art Smock

Sizes Youth XS - XL

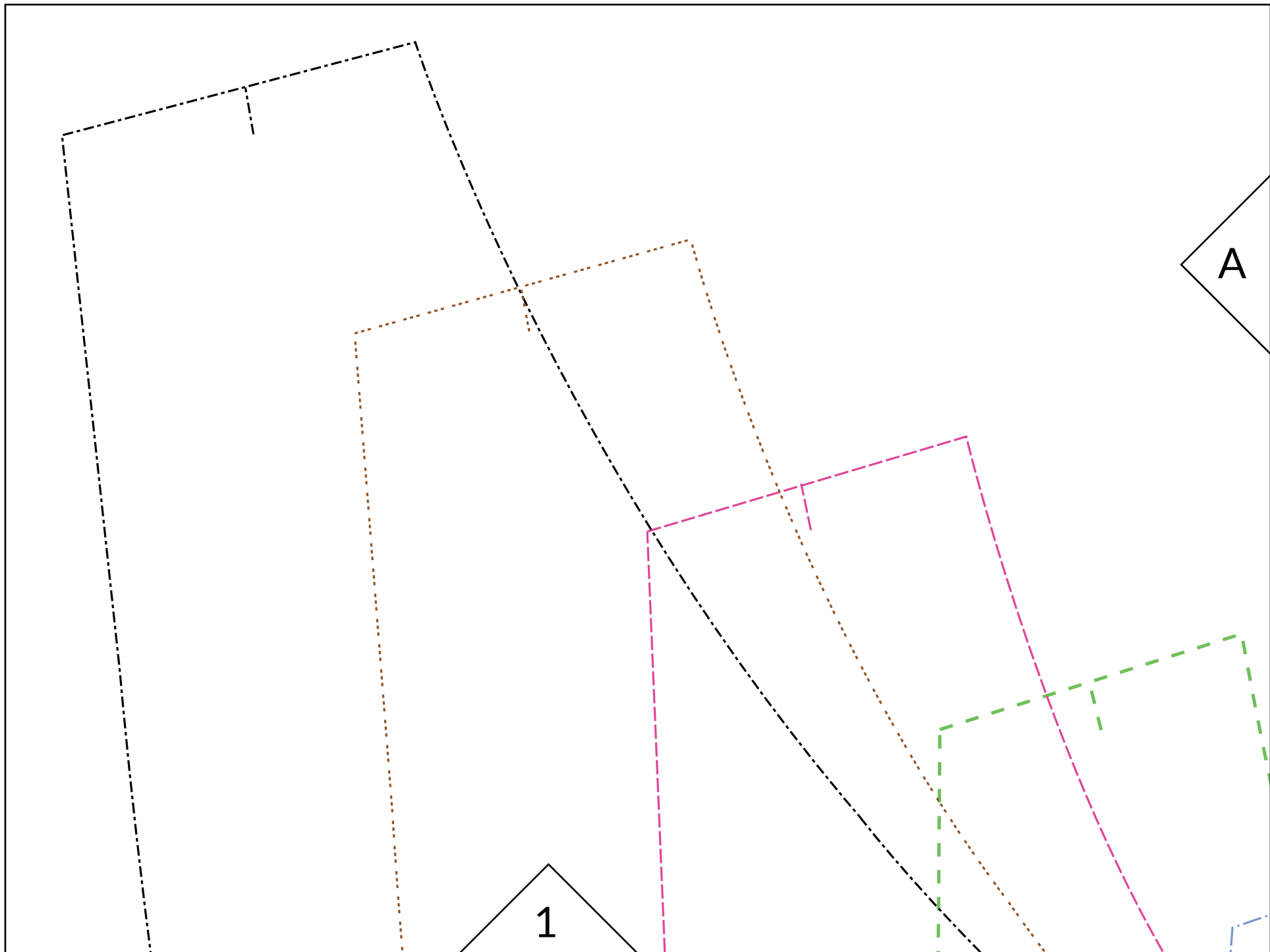


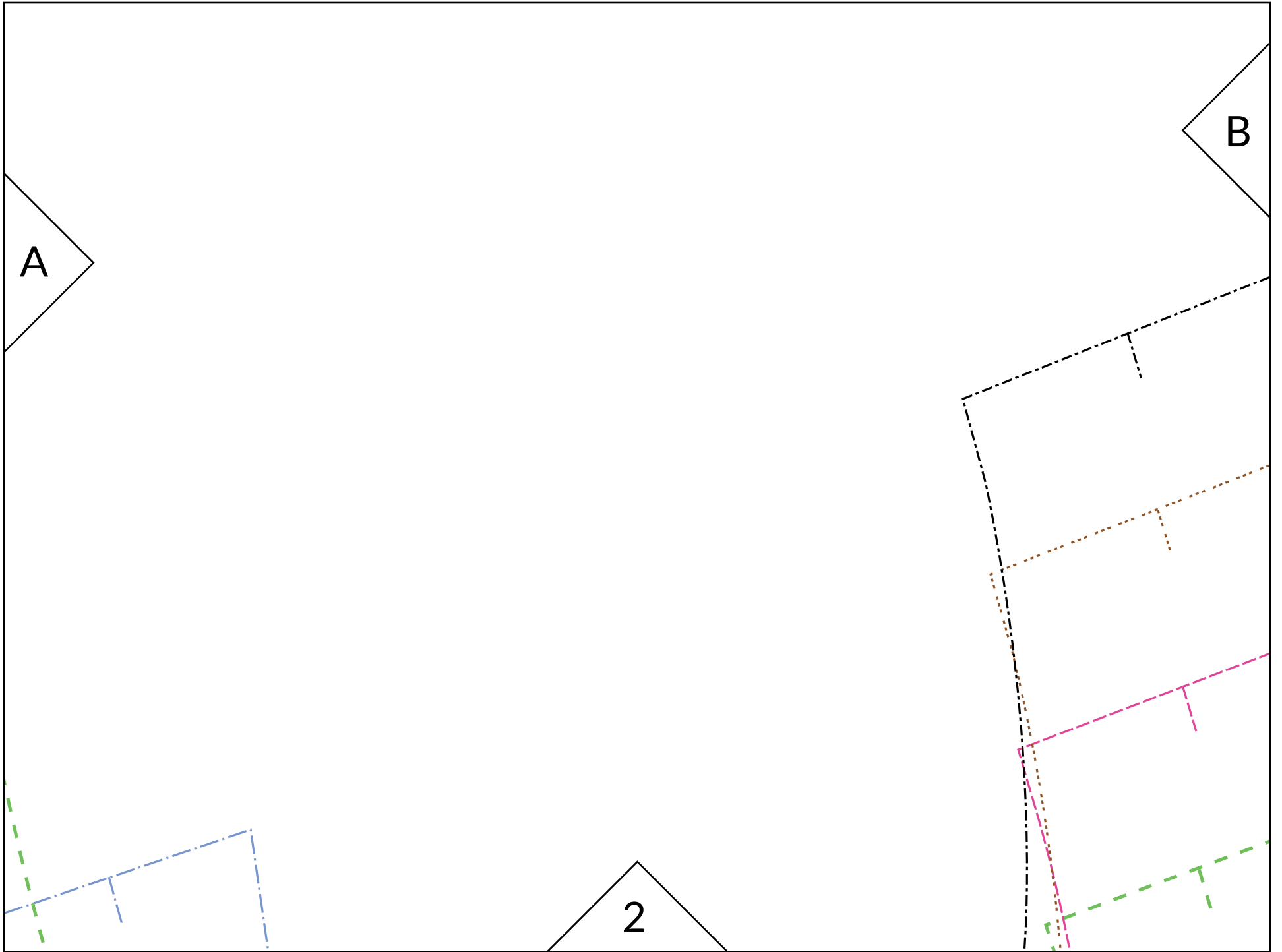
Size Chart

	XS	S	M	L	XL
Chest	20" - 21"	23" - 25"	27" - 29"	31" - 33"	35" - 37"

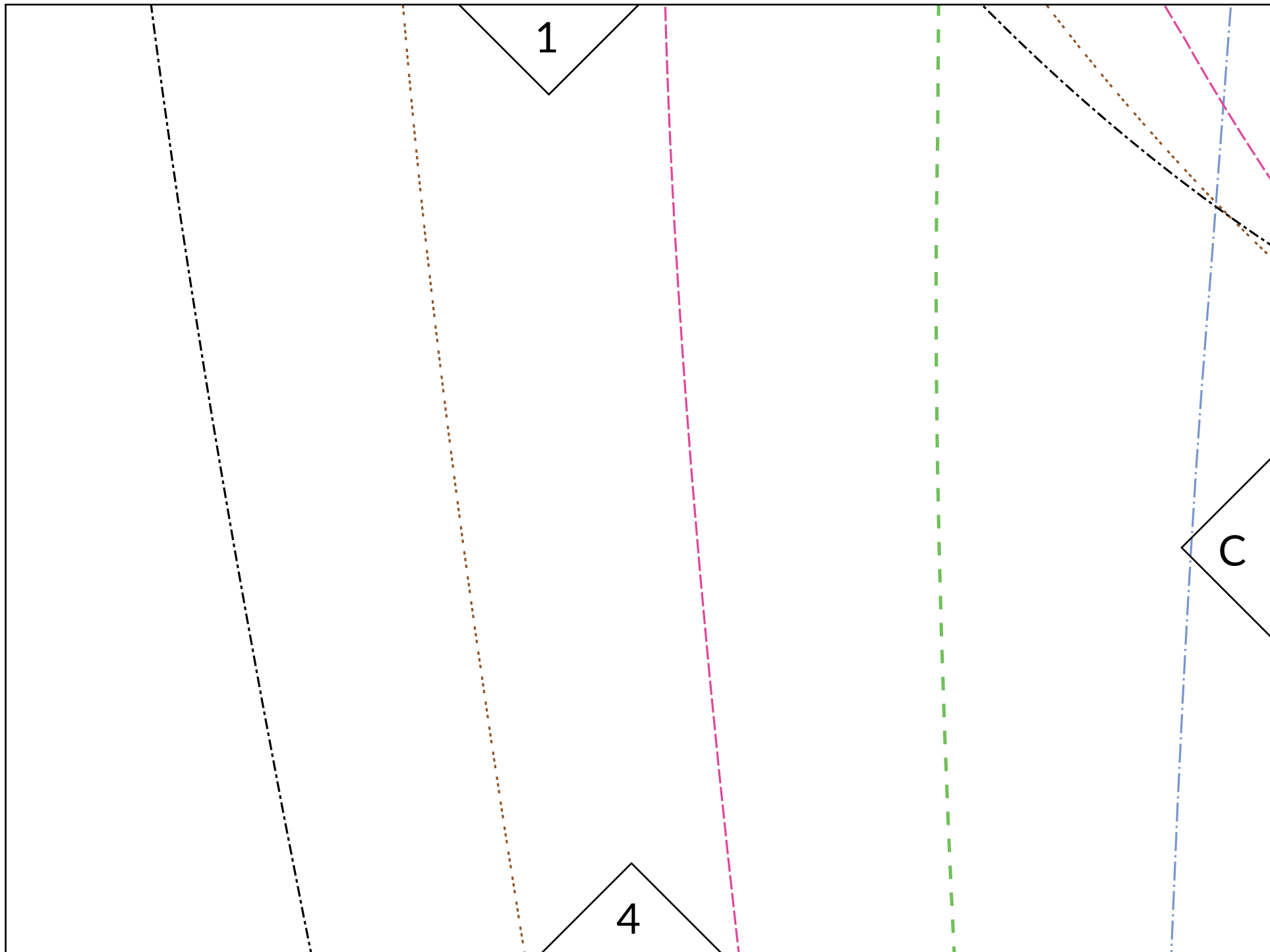
Yardage Needed

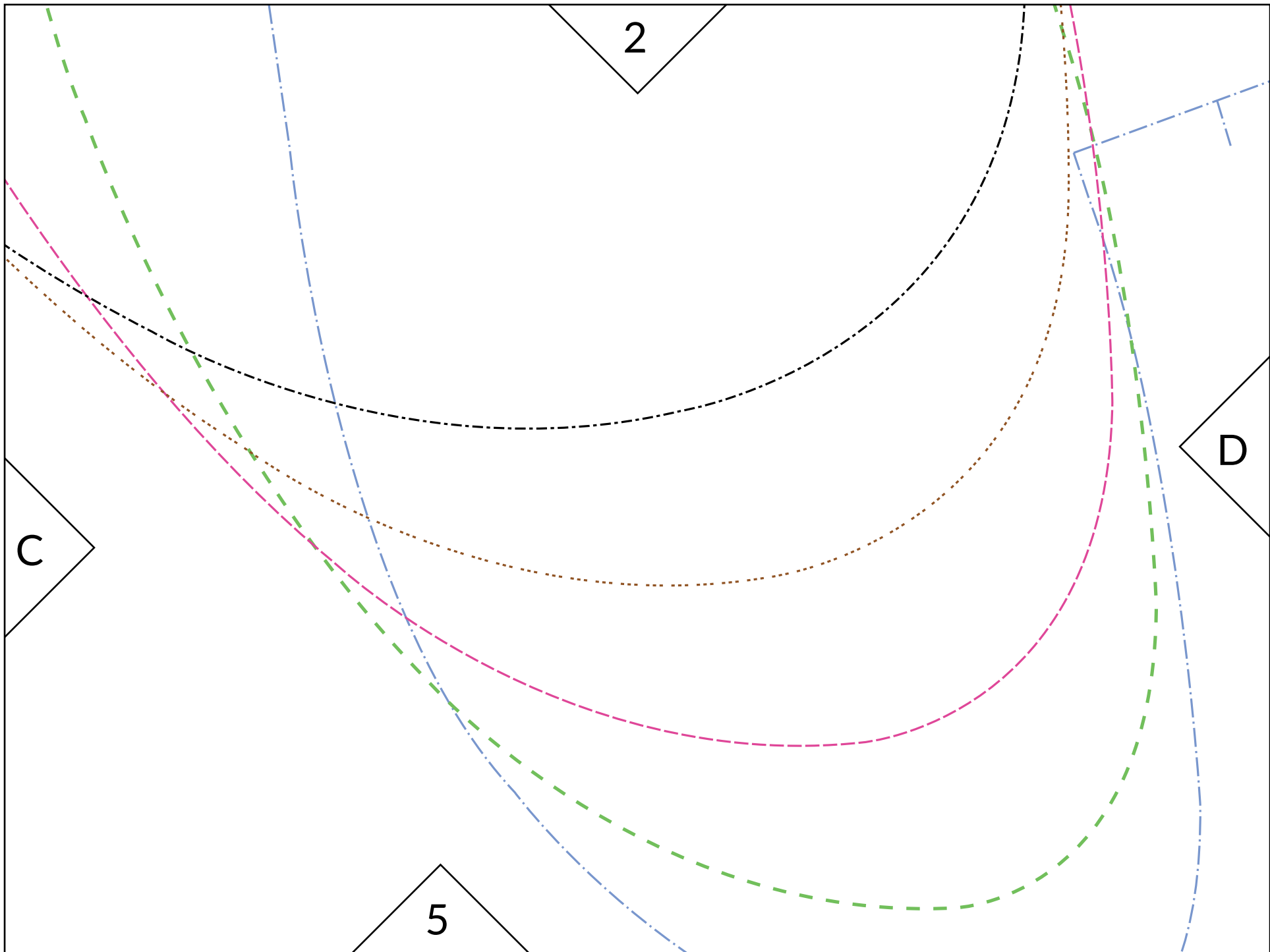
XS	S, M, L	XL
1 ¼ yards	2 yards	2 ¾ yards

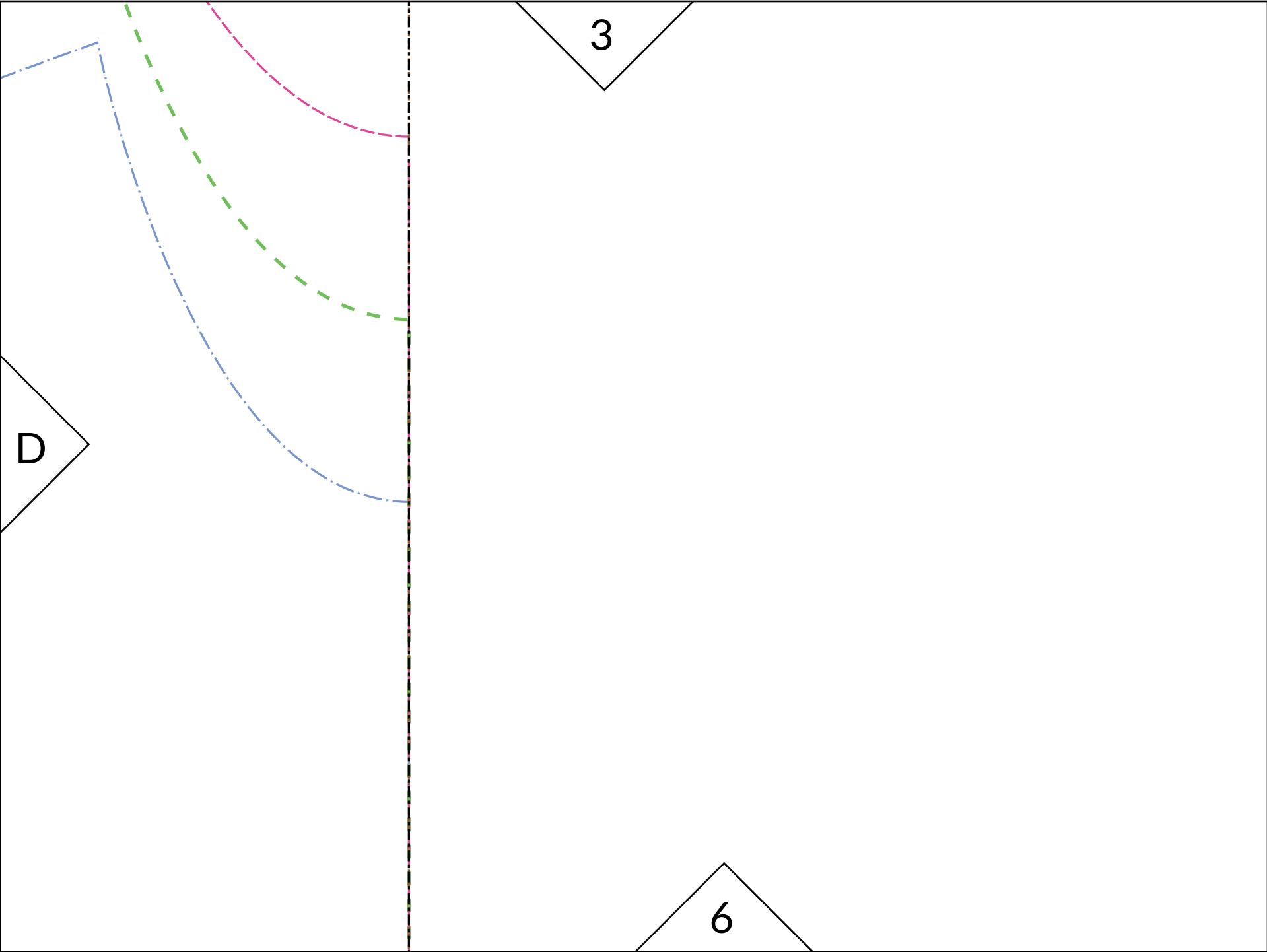


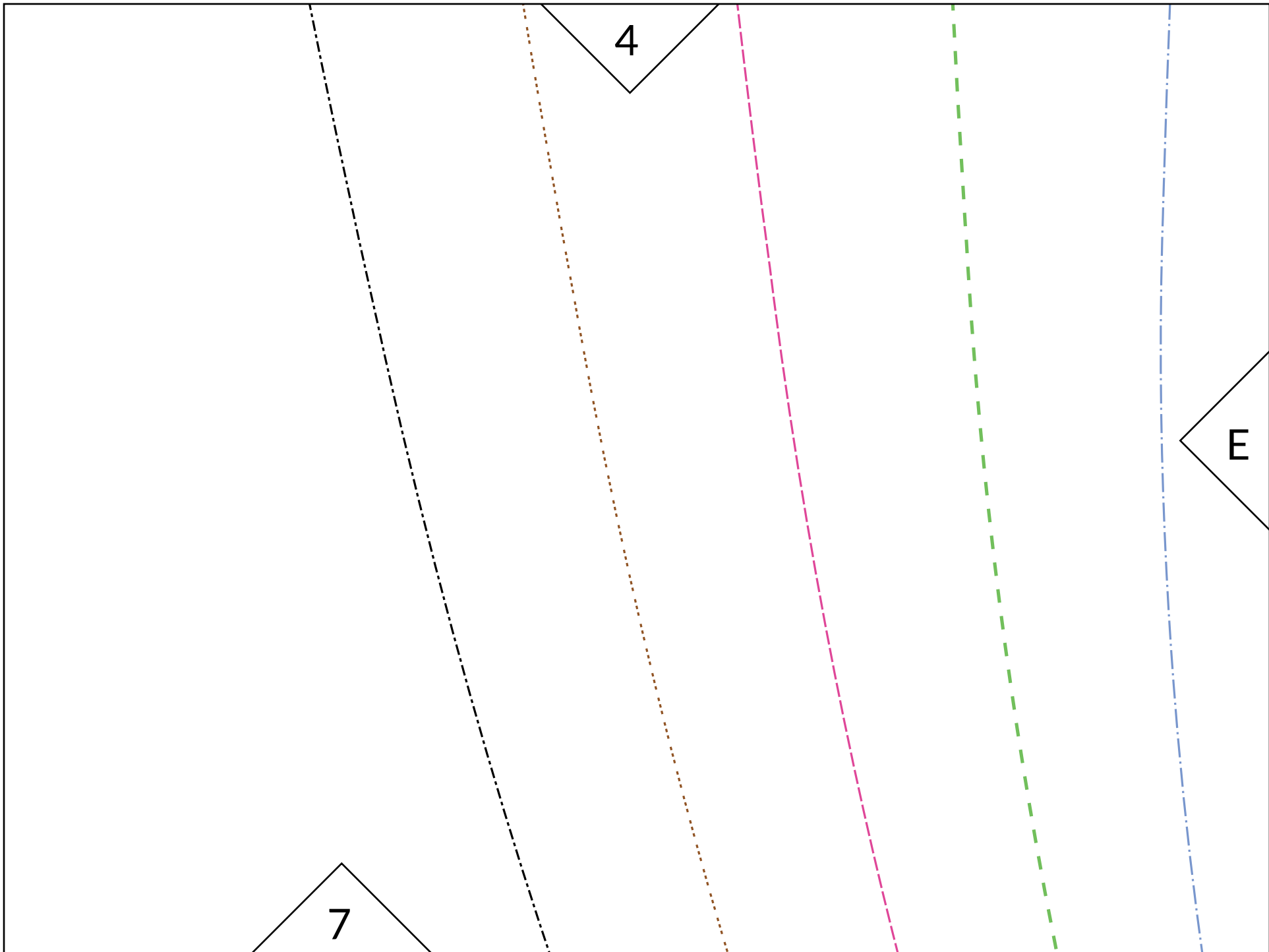












5

E

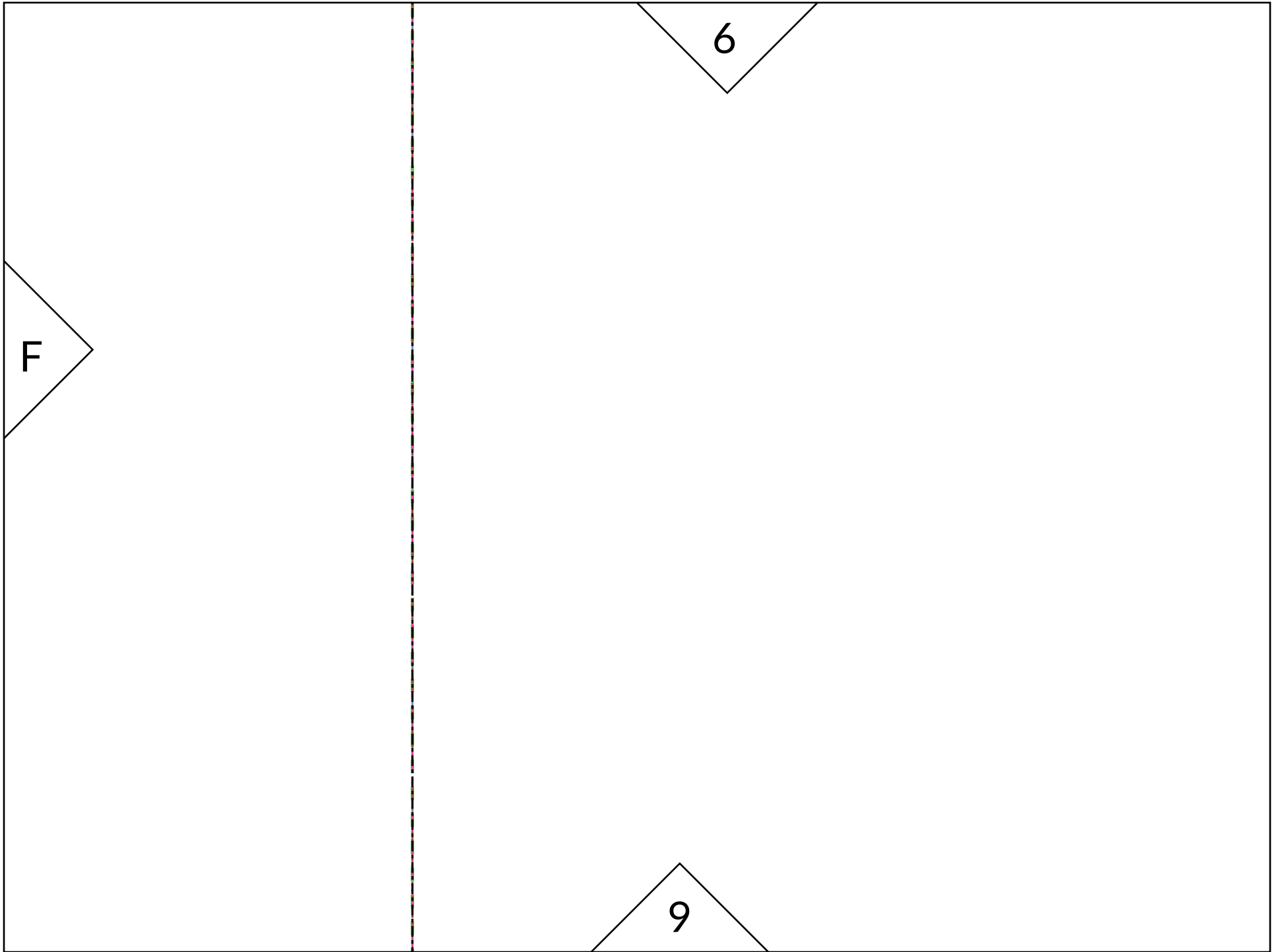
F

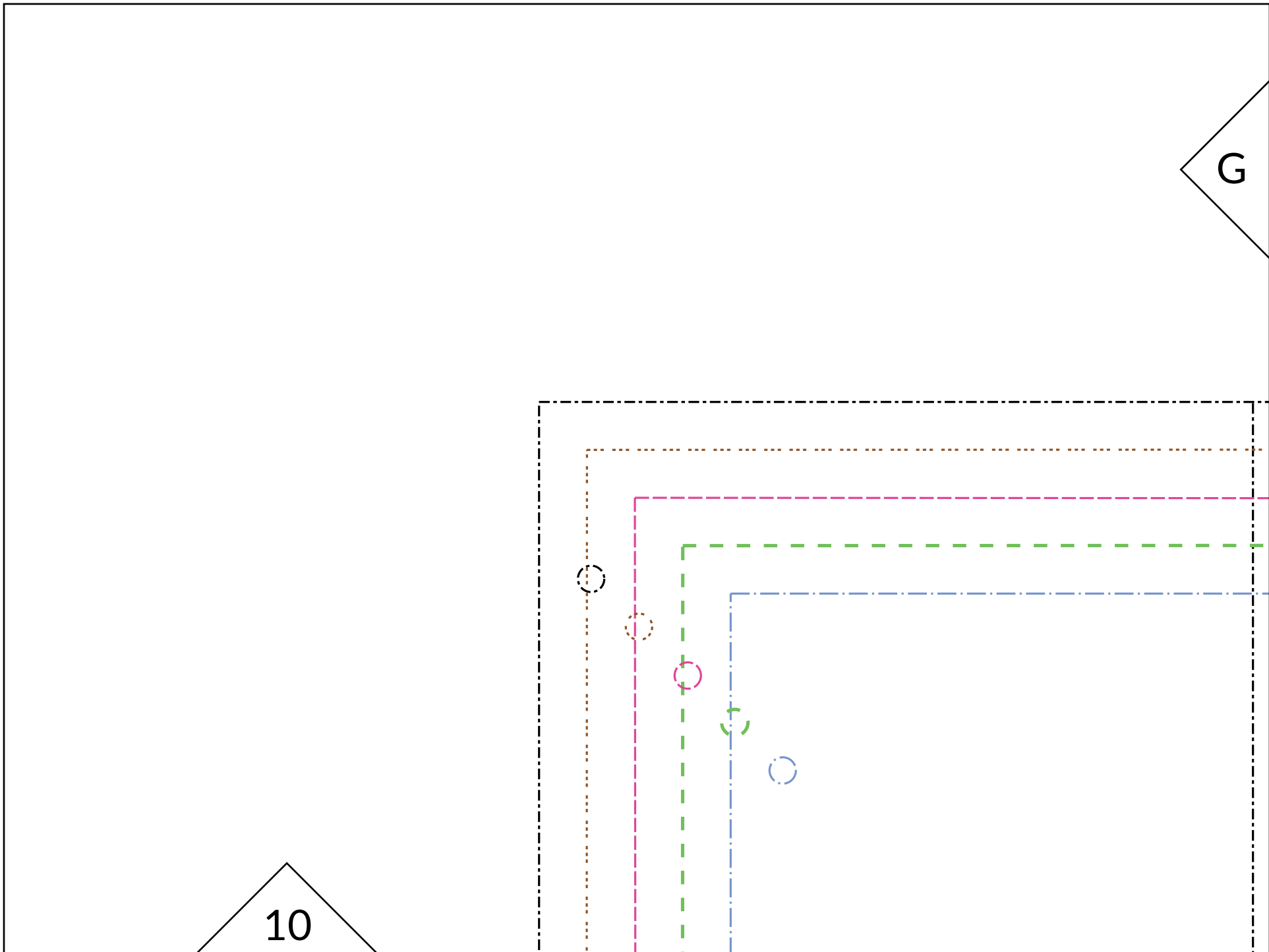
Child's Art Smock

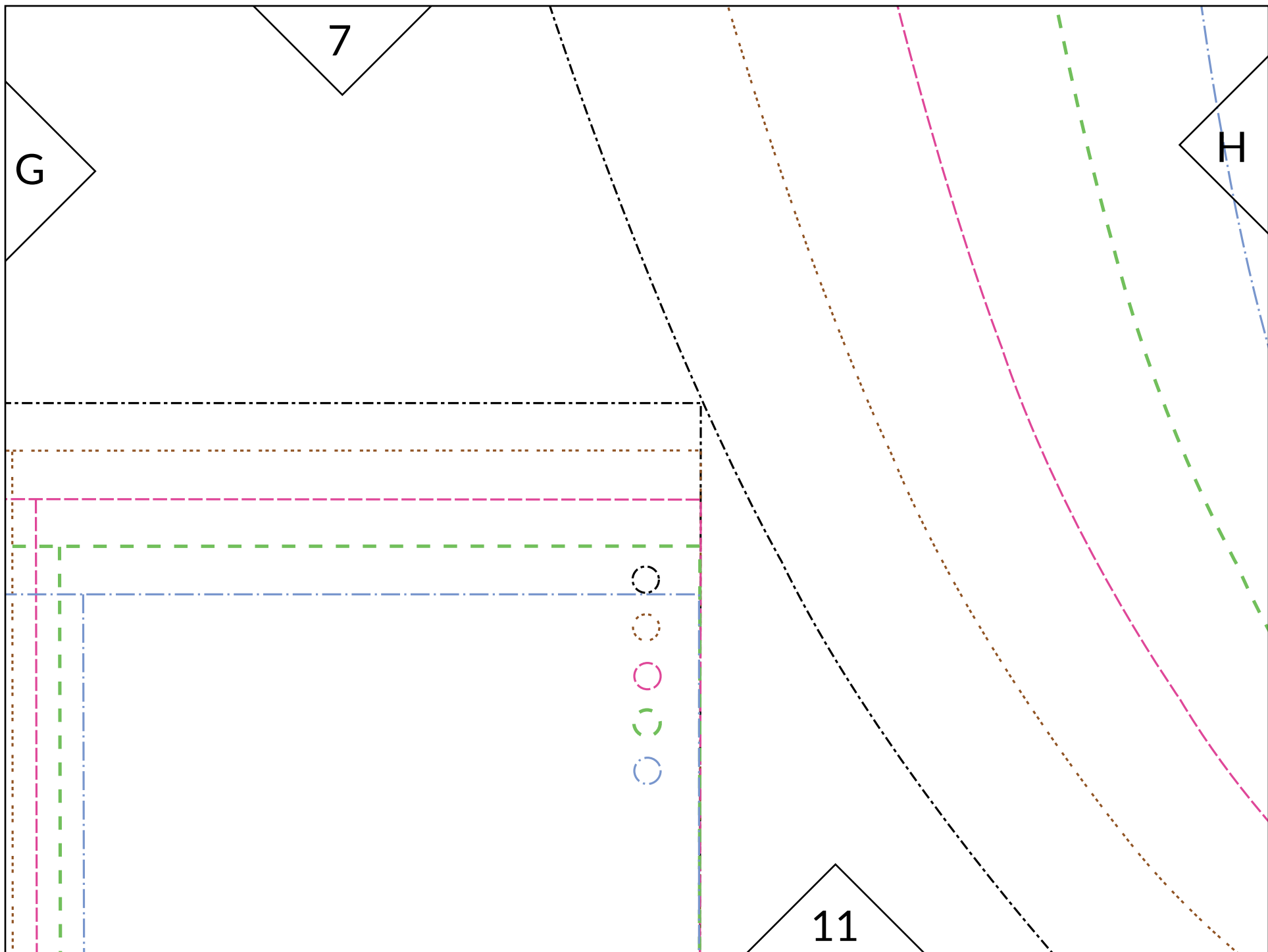
Cut 2 on Fold

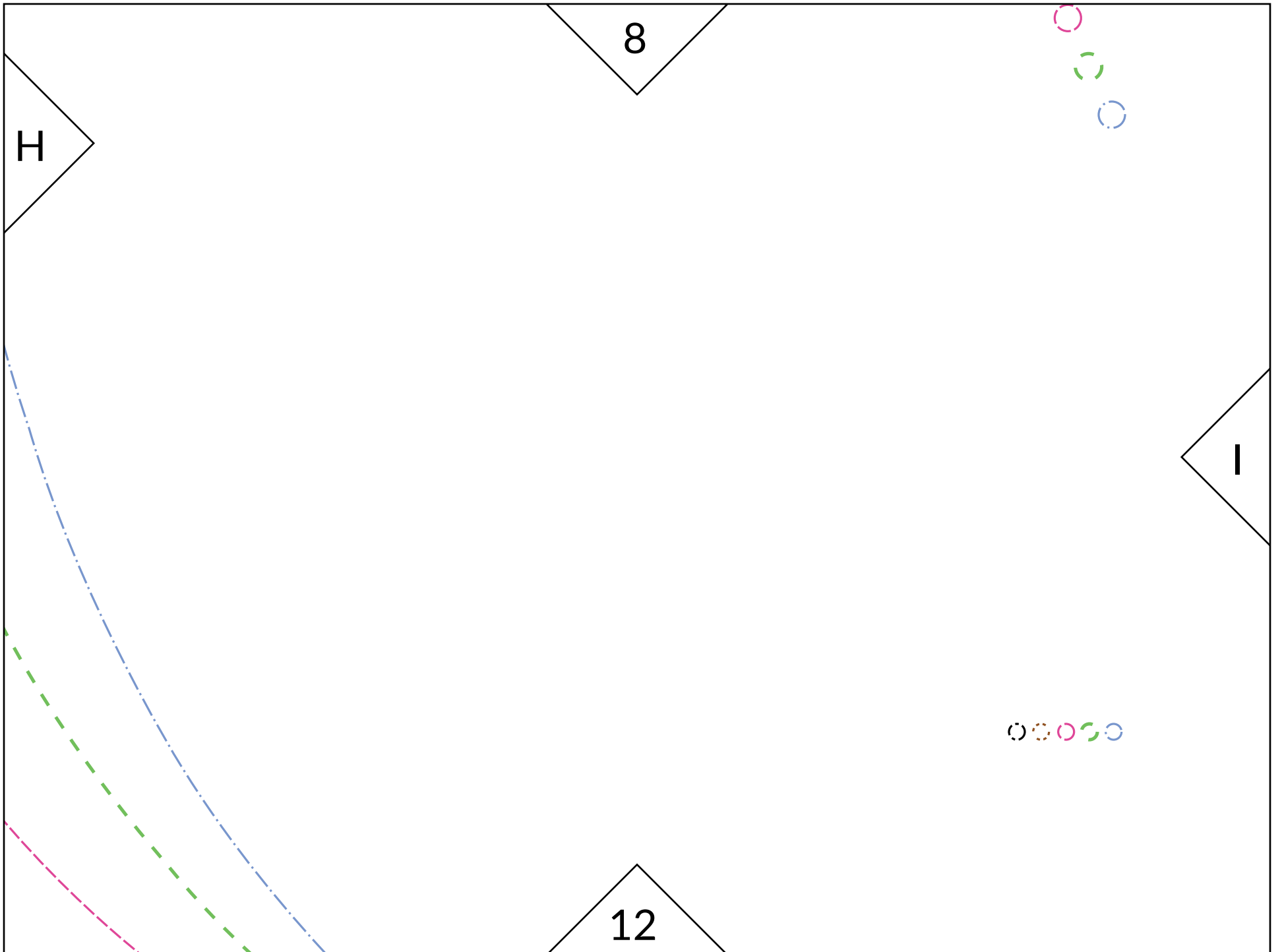
8

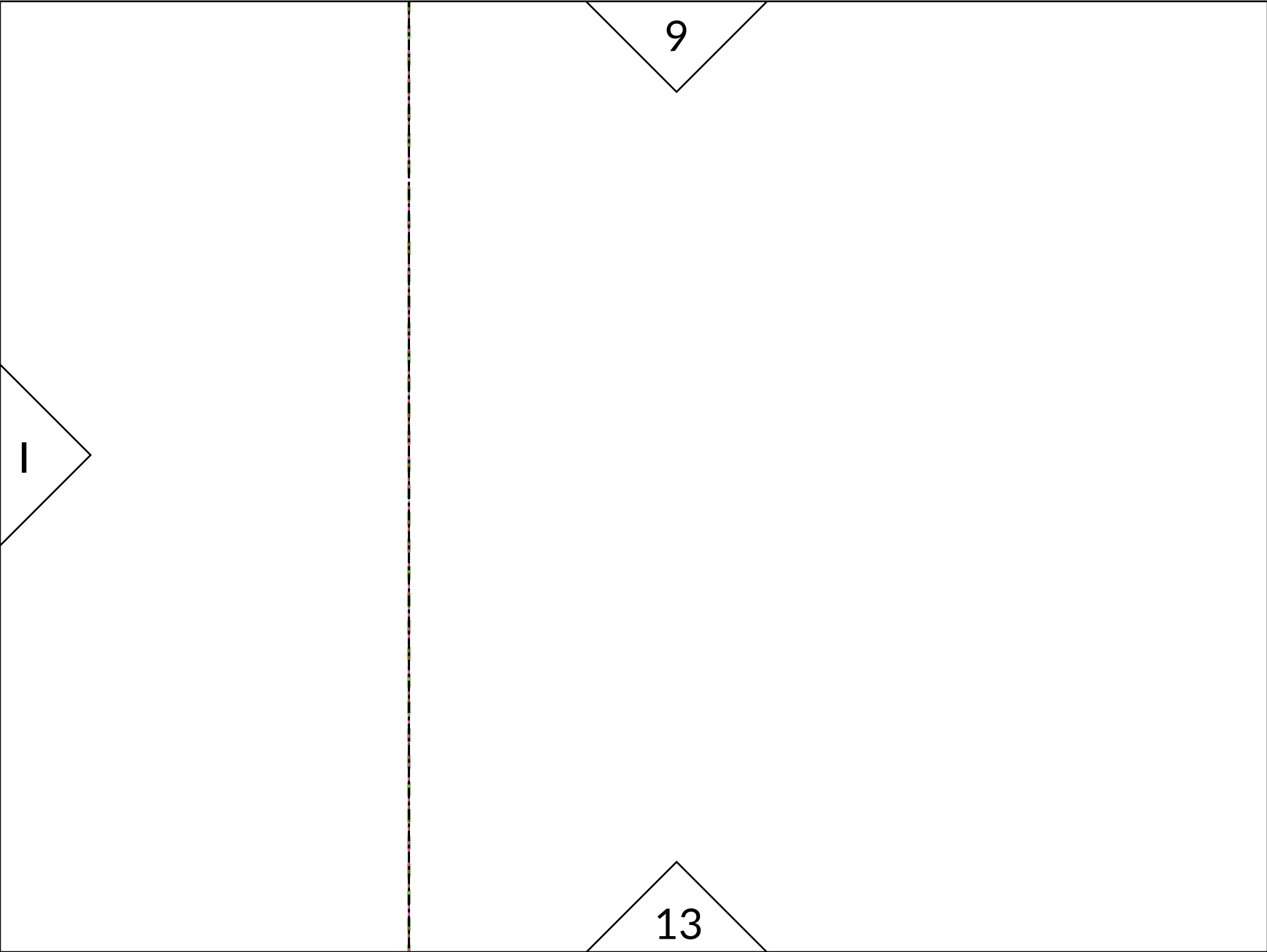




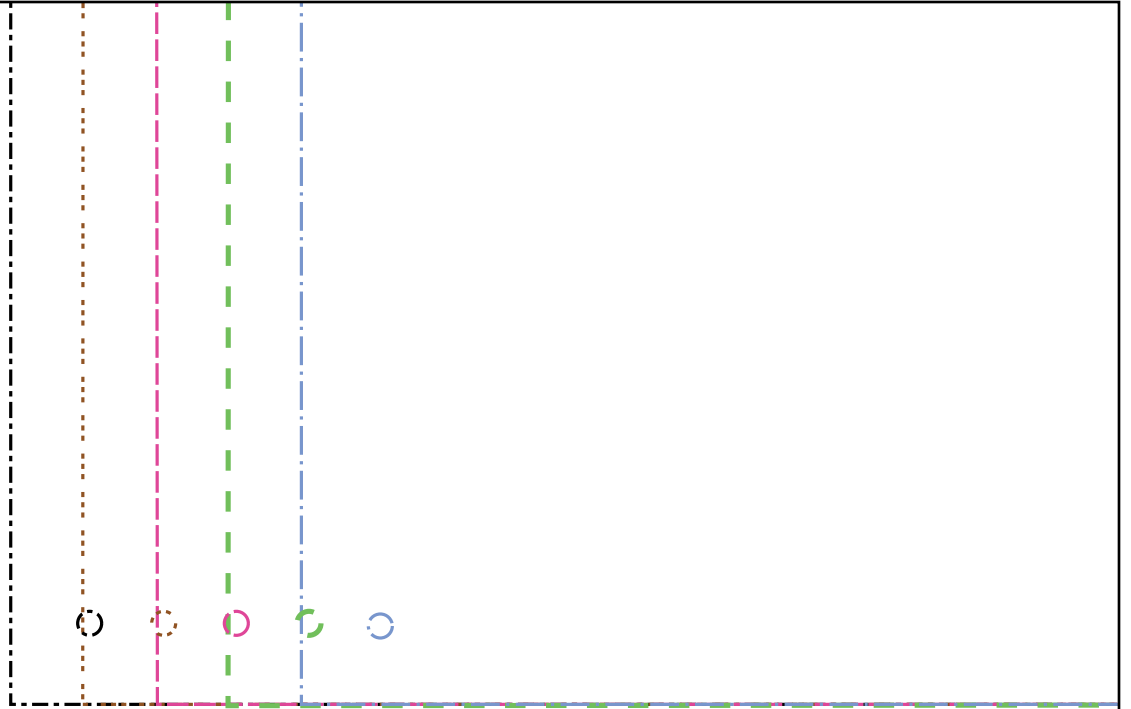








10



J

Child's Art Smock Pocket

Cut 2

11

K

J

